

Our history



ILTI S.r.l. , is present on the Italian and International market of **labelling machines**, with a huge know-how.

All members of the company team offer over twenty years of technical and industrial experience on labelling field and are well known in the marketplace.

Encouraged and supported by their customers, and in response to a market with changing and ever more demanding needs, a group of entrepreneurs and engineers decided to take on the challenge. They set up a new industrial business with the aim to become the leaders in self-adhesive labelling.

The choice to locate the company in the Mantova area was based on logistic reasons. Mantova is the heart of Italy's Label Valley where there is a high concentration of companies specialised in the construction of labelling machines. In fact, this area is known for a highly skilled and equipped supply chain, with a solid work culture and a specialised trained labour force.

Our principles



Fairness, respect, and openness are the basic principles that have always characterised our way of living and doing business, and upon which we establish a personal relationship with our partners. Sharing goals and involving all players on the team guarantee the achievement of the objectives that we set.

Our **passion** and commitment is our strength. The high level of professionalism of our team drives us on to continuous and constant innovation on our labelling machines, focusing on achieving technical perfection and fully satisfying the requirements of all those who rely on us and co-operate with us.

Quality is considered to be and sought after as the fundamental element in all the company activities, from product to services, workplace organization, and customer relationships.

Professionalism is an essential part of our culture. Our staff is the vital resource of our company. They are guaranteed the

opportunity to express themselves and develop their skills because their personal and professional growth is the life-blood of our company's success. Their well-being is reflected in the company's well-being, forming an unbreakable bond.

Products

PROPER Series Labelling Units



Specifically designed to meet today's market needs, with advanced features, suitable for handling all commonly used materials.

Available in 3 different models, for paper widths from **100 – 170** and **230** mm in order to meet different processing requirements, and with operating speeds ranging between **70 and 90 metres/minute** based on

label size and material.

High-quality construction of the labelling unit **PROPER**, ruggedness, and the modular construction allow to be used in stand-alone mode on processing lines, as well as integration with multiple labelling machines, both rotary and inline.

The **driving unit**, operated by a **servo-motor**, exploits the loop-shaped path of the web that winds around the drum in order to minimise possible slippage effects. The contrast roller features a spring-loaded adjusting system on both ends, thus allowing the handling of small labels.

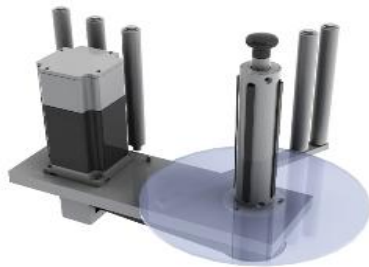


The **web-roll braking unit** is very simple to use and offers high performance. It is suitable for working on a flat surface, with a lever-operated cam-lock.





The pre-unwinder, with paper-roll self-centring system and featuring a drive arm with internal expanding brake, provides a smooth and constant unwinding of the web.



The rewinder with tensioning arm, controlled by a **servo-motor**, offers constant and smooth winding of the carrier web without excessive increase in web tensions.

The dispensing plate is dedicated and reversible according to usage requirements, for rotary (Proper-R), inline or stand-alone machines. Labelling angle is adjustable according to the various shapes of the containers.



The electronic components of the PROPER labelling unit are contained in a **separate control box**, for easy assembly onto existing production lines or for integration into complex labelling machines. The **user interface display** can be installed on the labelling unit or on the control unit. User programming levels are defined and protected by password.

and retrieve them by numeric code.

It's possible to store up to 50 different product label parameters and access

NERVE Series Labelling Unit

A logical evolution of the **PROPER-2** labelling unit, but with different objectives and target applications. The **PROPER-4** series, in fact, is dedicated to high speed applications and can achieve output speeds exceeding **1000 labels per minute** and **130 metres/minute** as, for example, when using extremely thin materials.

Taking advantage of the main principles and modules of the PROPER labelling unit, this series features a **triple driving system** (by means of **servo-motors**) on driving unit, pre-unwinder and rewinder.

The **advanced film tension control system**, featuring the latest generation electronics, provides for separate control of the different driving units.

Designed in two models, for **100** and **170**-mm paper widths, in right- or left-handed version, the unit can be used stand-alone or can be integrated into rotary machines.



MODULine Series Inline Labellers



The **MODULine** series includes fully automatic inline labellers, featuring modular construction and assembled according to specific customer's needs.

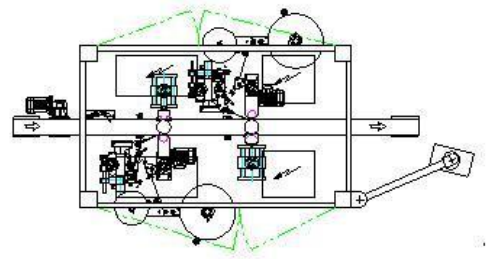
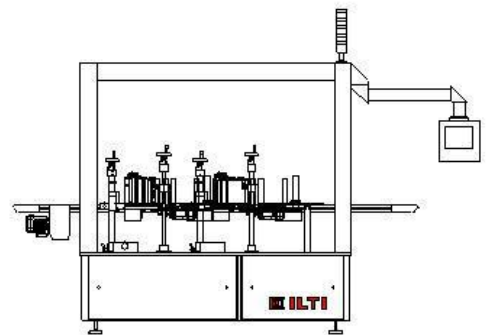
All elements in this series are designed with highly accurate 3D-design technology and **top-quality** materials.

Even the components are not selected at random. In fact, materials from major international suppliers are being used, and for this reason easily available on the **worldwide market**, thus allowing the users to directly carry out maintenance, also thanks to a very simple and functional design.

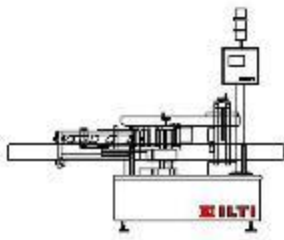
Our design and construction philosophy allow labelling of shaped or cylindrical containers, with **front** and **back wrap-around** labels.

The **Inline Labeller System** is based on standard modules including:

- **Steel structure**, in two different sizes, according to the number of elements to be installed.
- 2.5 or 3-m long **conveyor belt**, cross section 100 mm, with independent drive.
- Upper 1300 or 2100-mm **counter-belt**, with independent drive.
- **PROPER-IL** labelling units.
- Different solutions for containers' spacing at feed-in, with **pneumatic piston**, **lateral belts**, or **selecting scroll**, according to the container to be labelled and to the required speed.
- **Container centring** by means of opposed chains.
- **Label smoothing** by means of sponge-rubber rollers or sleekers, according to the container/labels combination.
- **Wrap-around** label dispensing by means of wrapping unit and counter-sponge, or by means of a module featuring 3 opposed drums.
- Different solutions for **label-presence control**, while the **rejection** is performed by a practical pneumatic pusher.
- Possibility of **printing** the label using Hot-Foil or thermal transfer technology.

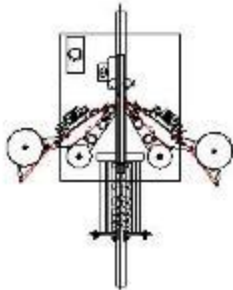


SSLine Series Inline Labellers



This **standard inline labelling system**, suitable for shaped or cylindrical containers, can handle front and back labels as well as wrap-around labels.

Developed for the **home and personal care** and the **detergent market segments**, where plastic containers are widespread, this inline Labeller combines high production capacity, ease of use, and low operating costs in a single unit.

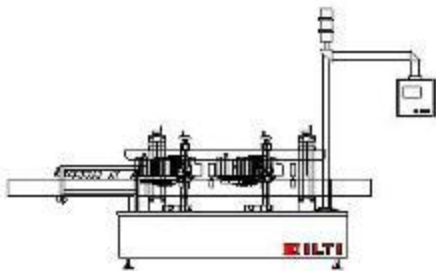


This self adhesive labelling system features standard modules for specifically targeted applications. The speed varies according to container size and product pitch with outputs of up to **250 BPM** on 250-ml containers.

Container selection is performed by **two opposed scrolls** that escort the container until it arrives under the counter-belt.

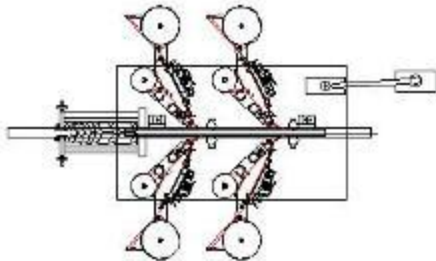
Two **PROPER-IL** labelling units, installed on both sides of the conveyor belt, simultaneously apply the front and back label.

Label smoothing is guaranteed by flexible sleekers and sponge rubber rollers.



At the end of the counter-belt, a **wrapping unit** with pressure counter-sponge can be installed for smoothing wrap-around labels (optional).

The transmission of the labeller machine and of the installed units is centralised on the base frame; similarly, the electric system is installed inside the base structure.



Thanks to a practical **control panel**, installed in ergonomic position, the operator can operate the machine from both sides of the conveyor belt.

Even this inline labeller machine can be equipped with optional devices, such as **coder**, **label presence control** and **rejection** of unlabelled containers. .

The **SSLine** is a simple, practical and efficient self adhesive labeller machine at an highly **economical cost**.

SELine Series Inline Labellers

Standard inline labelling system, for oval containers, dispensing front and back labels.

The design of this inline labeller has been accurately developed focusing on its **flexibility**. The capacity of the machine to adjust to different shaped containers without specific format parts makes it ideal for those lines where the use of different container sizes is privileged or essential respect the speed of production.

With a speed of up to **140 BPM**, this labelling system has been developed for the food and detergents industries. Low operating costs, reduced maintenance and simple use are strong points for small and medium lines.

The containers are selected by **drive roller**, which slow down the incoming containers and accurately space them at the machine inlet.

A system consisting of **opposed chains** provides for the containers centring and positioning, by means of elastic elements that follow the container until it reaches the upper counter-belt.

Two **PROPER-IL** Series units, installed on the sides of the conveyor belt, simultaneously dispense front and back label.

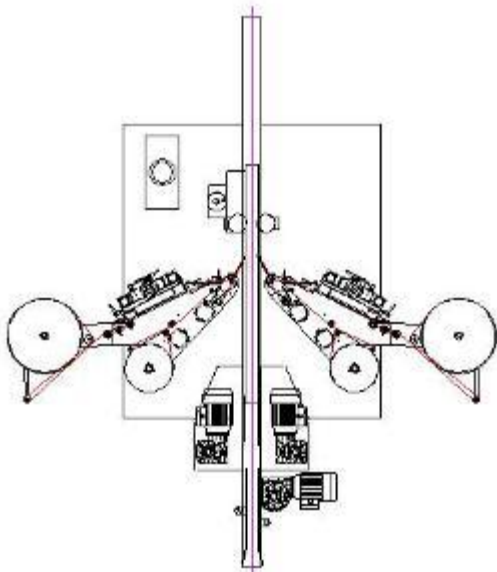
Label smoothing is guaranteed by flexible sleekers and sponge rubber rollers.

Transmission is independent for each installed element, thanks to last-generation **servo-motors** and dedicated electronics, controlled through a **Siemens S-300 Series PLC**.

The electric system is installed inside the machine base, in a protected though easily accessible position.

Thanks to a practical **control panel**, installed in ergonomic position, the operator can operate the machine from both sides of the conveyor belt.

Even this labeller can be equipped with optional devices, as **coder**, **label presence control** and **rejection** of unlabelled containers.



RS Series Rotary Labellers



The entry level version in **ILTI's** range of self adhesive rotary labelling machines.

While sharing most components with the more impressive **RE Series**, the **RS** version has been conceived for speeds up to **350 BPM** using high-quality standard components.

Proposed in **three different carousel diameters** and with the possibility of different machine pitches, the versatile range of this self adhesive rotary labeller, includes **8 different versions**,

suitable for handling **cylindrical, shaped, full or empty containers** and for applying up to 4 different labels on the same container.

The **high flexibility** of this rotary system is achieved thanks to **electronic individual platform rotation**, operated by high torque motors (ILTI's standard solution) and of the **PROPER-R** Series labelling units, which are driven by servomotors.

Thanks to these two elements, and the **upper centring jacks** (having various functions, such as the pressurization of empty containers) this version is highly utilizable.

The use of standardised components reduces delivery times and costs, protects the customer's investment and guarantees a rapid return on investment.



The **compact base structure**, latest generation transmission, labelling units external to the machine structure, adjustable spacing scroll, smoothing stations radially mounted on the carousel, and electric cabinet installed on the upper part of the machine, in a protected but easily accessible position, are just some of the features of this **high-tech labelling system**.

All models of those self adhesive labeller machines can be equipped with following optional devices:

- **Mechanic container orientation**, through reference marks

on the bottom or side;

- **Electronic orientation**, through vision system or optical sensors according to field of view and individual insertion for each single plate or specific insertion for all plates;
- **Container centring** with self-centring plates;
- **Label presence** and **position** control systems;
- **Rejection system** for unlabelled containers, by means of simple pusher or multiple diverter;
- Installation of **coders** either on the labelling unit (hot-print or thermal transfer) or on the carousel (ink-jet or laser), for printing codes in a preset position.

RE Series Rotary Labellers



same container.

The self adhesive rotary machine is designed to be **ergonomic** and **compact**, and is simple, quick and **comfortable to operate**. The **control panel**, for instance, is a **touch-sensitive** control panel with an icon menu specifically developed for the novice user without specific technical skills.

An **innovative design**, with labelling units mounted outside of the machine body and complete safety guards opening vertically, for reduced overall size and easy access. The unit features the latest generation transmission, with the geared motor installed directly onto the carousel, thus reducing transmission tolerances.

Designed and constructed using **advanced computer-aided design systems**, it has been developed to last over time and run in particularly difficult environments. Available in various models, with speeds up to **600 BPM**, it features top-quality components, but is still



The top of ILTI's know-how in the world of self-adhesive rotary labeller machines.

A **more versatile** rotary labeller meeting all kinds of needs, combining the latest technology and incredible flexibility. A **new machine concept**, designed for longevity and capable of adapting to ever-changing market needs. This is a **"future proof"** investment.

It can handle **shaped, cylindrical, full and empty containers**, requiring **mechanical or electronic orientation**, and applies **front, back, neck** labels as well as **promotional** labels and even **wrap-around** label on the



customisable according to specific technical needs of each customer.

Total flexibility, thanks to the electronically programmable plates rotation, to the labelling units radially installed on the machine carousel, to the container locking systems using special plates and self-centring heads. The upper pressure jack can be operated mechanically, pneumatically or with pressurisation for empty plastic containers.

The self adhesive labelling stations are the **Proper-R**, driven by servomotors and assembled on **adjustable** supports (**on 4 axes**), to suit the wide range of containers. They can be installed on **extraction slides**, for **non-stop operation**, thus providing high production efficiency, without stopping the machine for replacing the empty reel.

With an aim towards maximum flexibility, different **coding systems** may be added. They can be installed on the Proper-R labelling unit (hot or thermal transfer) or on the machine carousel (Ink-jet or laser).

Various **label presence** and **position control systems** are available as optional devices, with optical sensors or cameras, which can be combined with **rejection systems** developed according to the speed and the type of container.

The **rotary System RE** is particularly suitable for all high-efficiency packaging lines where Non-Stop function is required or where multiple labelling units are installed.

Proposed in **four different carousel diameters** and with the possibility of different machine pitches, the versatile range includes **15 different versions** for speeds up to **600 BPM**.

RP Series Rotary Labellers

ILTI's **high-speed** self adhesive rotary labeller, with a production capacity of over **1000 containers per minute**.

Based on the rotary system **RE Series** but utilising more innovative components and technical solutions, this machine stands out for its equipment, which come standard with automated **centralised lubrication** and a **Nerve Series** self adhesive labelling unit.



Thanks to the **unic tension control system** and the triple operation by means of servo-motors, the Nerve Series labelling unit allows the application of **very thin media**, as well as the attainment of very high production speeds, in total safety and without excessive stress.

High speeds also mean **reduced cycle times**. For this reason the **RP Series** is based on large machine carousels, providing the space required for smooth operation.

Special attention has been paid to **container handling**. In fact, the stress on the containers is reduced by using small machine pitches and high resistance plastic shaped change parts.

The rotary labellers **RP Series** are inseparably linked to **Nerve labelling units**. The latter is still in development, and for this reason the whole range of RP Series labeller will be launched on the market only at its completion.

For the labeling machines RP Series, are provided three different carousel diameters to meet all market requirements.

